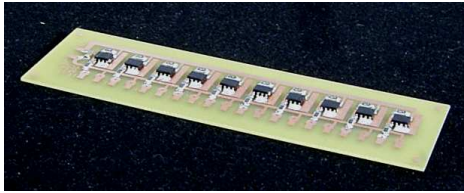


03/05-10

KONLED10DC-SMD 10-channel constant-current source ultraflat*Datasheet and connecting-plan***KONLED10DC-SMD**ultraflat 10-channel constant-current source
for light-emitting diodes (LEDs)

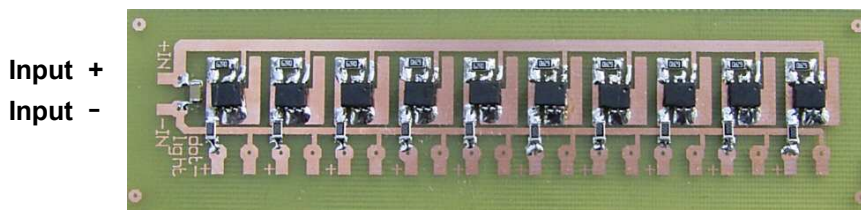
Safe supply for your LEDs!
Easy connection by clearly marked large soldering-pads
with enough distance.

Dimensions: ca. 34 mm (W) x 3 mm (H) x 120 mm (L)
Weight: ca. 10 grams

Technical data:

Outputs: 10 pairs of soldering pads, 2-poles each
Output standard: 20 mA DC
Input: 5-40 V DC
Voltage-drop : ca. 3 V

Constant-current sources for direct current.
Connecting by soldering (large soldering-pads)
The output-current is precisely stabilized.
Thermal protection
Protected against confusion of the poles up to 40 volts!
Precision by integrated circuits
Tolerance < 3% over the whole voltage-range.
Every constant-current source ist electronically tested.
4 holes for M3-screws can be drilled when needed
Ultraflat by SMD-technology (surface mounted components)
Input marked with +In and -IN
Outputs are marked with "+" each.

Connecting-plan:

Outputs: "+" marks the +-pole, right side of each pair ist the minus-pole
(indication on the solder-side)

Available versions on request:

2 mA, 5 mA, 10 mA, 30 mA, 40 mA, 50 mA, 60 mA, 70 mA

-date 03/05- -alterartions preserved-

A1W[®] is a registered trademark of telefix elektronik wolf westerburg GmbH
Homepage: <http://www.A1W.de> E-Mail: info@A1W.de