

02/06-1

Data sheet and connections

LD20PWM Constant-current source 20 mA

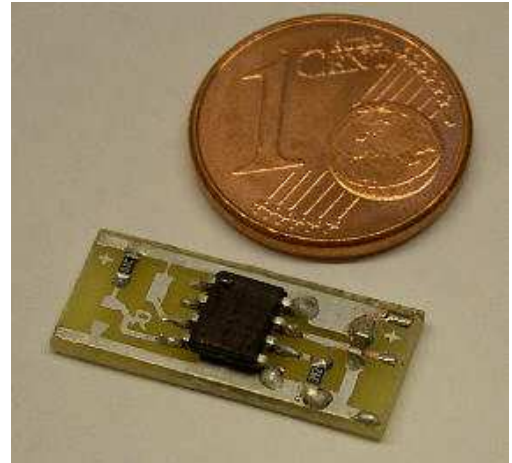
Cheap and tiny Low Drop constant-current source for LEDs

With external controlling possibility -Shutdown- up to 40 Volts DC



LD20PWM Low-Drop Low-Cost constant-current source 20 mA with PWM-connection in miniaturized design

- Constant-current source 20 mA
- Low Drop
- Low Cost
- 20 mA constant output
- Input voltage: min. 4 Volts DC
- max. 40 Volt DC
- Drop: typ. 0,3 Volt, 0,5 Volt max.
- Reverse polarity protection
- Short circuit proof
- Thermal protection
- Overload proof
- Temperature coefficient: slightly negative to protect the LEDs (Module shall be mounted close to the LEDs)
- Dimensions: only 8 mm(W) x 19 mm(L), 2,6 mm (H)
- Weight: < 1 Gramm
- Shutdown-Pin for remote control and dimming (when activated: 0 = OFF 4 to 40 Volts = ON)

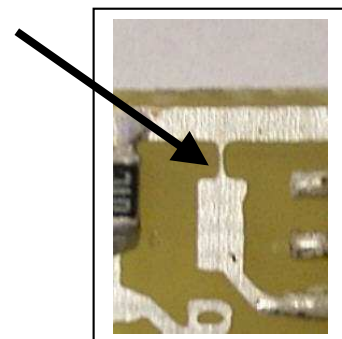


The constant-current source can drive up to 11 ultrabright blue, green or white light-emitting diodes in serial connection at 40 Volts. At 4,5 Volts one ultrabright LED in blue, white or green or instead two ultrabright red or yellow LEDs with 2 Volt forward voltage can be fed.

When combined with the DIMLED module brightness can be adjusted from 0 bis 100%.

Connections:

cut here to activate the Shutdown-Pin !



Other values of output-current in the range from 1 mA to 90 mA on request.

-date: 02/06 -alterations preserved-

A1W® is a registered trademark of Alois Wolf D-56457 Westerburg
homepage: <http://www.constant-current.com> e-mail: info@A1W.de