

01/06-2

Datasheet and connections

LKO700 Constant Current Source 700 mA

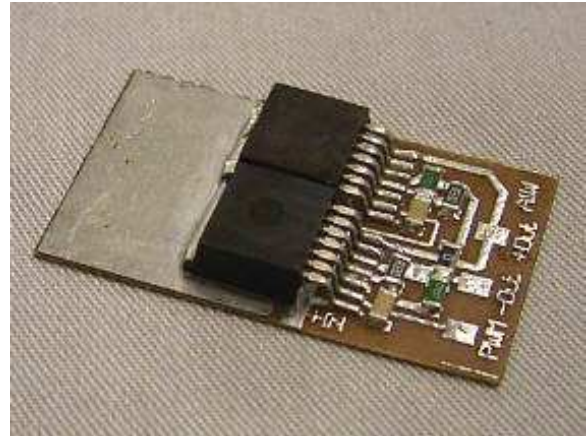
for 3 Watt Luxeon Stars and other 3 Watt High-Power-LEDs
with external control-possibility -shutdown-



LKO700 Low-Drop Low-Cost Power-Constant-Current-Source 700 mA

For 3 Watt Luxeon Emitters,
3 Watt Luxeon Stars and other LEDs with 1000 mA

- Power-Constant-Current-Source 700 mA
- Low Drop
- Low Cost
- 700 mA constant output
- Input : min. 4,5 volts DC max. 40 volts DC
- Drop: ca. 0,8 volts
- reverse polarity protection
- short circuit proof
- thermal protection
- overload proof
- Dimensions:
- 23 mm x 40 mm, 4 mm high
- Weight: about. 4 grams
- Shutdown-pin for remote control, dimming etc.



The difference between input and output voltage may not exceed 3 volts when not cooled. Otherwise the output power will decrease.

When mounted on a metal surface or heatsink e. g. with a cooltape pad, the difference between input and output voltage may be larger, depending on temperature.

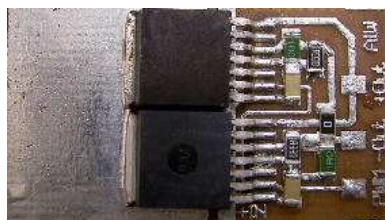
A good thermal management is obtained by a double-sided copper-plated printed-circuit board.

For example, when mounting at room temperature on the case of a PC with cooltape, the input-output-difference may be about 6V.

Separately, this has influence on efficiency. For applications like this, we recommend using a HKO700 module.

Connections:

The cooling area is minus(IN)



- IN + Input Voltage (+IN)

+ LED (+OUT)

- LED (-OUT)

PWM-Connection*,

New:

External control by the shutdown-pin.

Max. 40 V DC,
for dimming, remote-control etc.

*** PWM: When operating without ext. control, connect with +!**

The cooling area on the circuits back is electrically isolated from the circuit.

NEVER connect „- LED“ with minus of your power source!

Other values of output-current in the range from 50 mA to 1000 mA on request.

-date: 01/06 -alterations preserved-

A1W® is a registered trademark of Alois Wolf D-56457 Westerburg

homepage: <http://www.A1W.de> e-mail: info@A1W.de