

09/05-1

Data sheet and connections

LKO350 Constant Current Source 350 mA

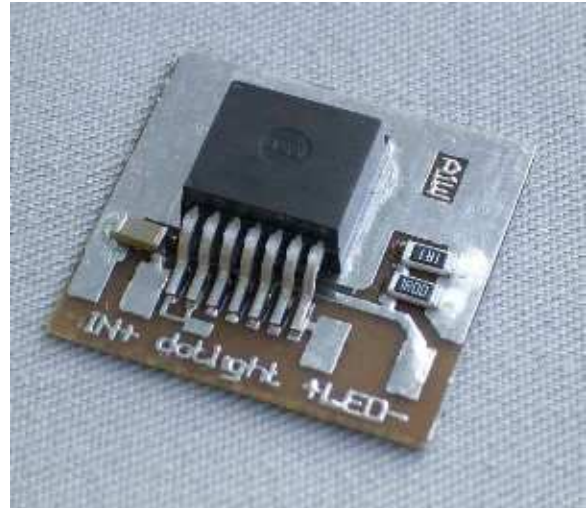
for 1 Watt Luxeon Stars and other 1 Watt High-Power-LEDs
with external control-possibility -shutdown-



LKO350 Low-Drop Low-Cost Power-Constant-Current-Source 350 mA

For 1 Watt Luxeon Emitters,
1 Watt Luxeon Stars, Osram Golden Dragon and other LEDs with 350 mA

- Power-Constant-Current-Source 350 mA
- Low Drop
- Low Cost
- 350 mA constant output
- Input : min. 4,5 volts DC max. 40 volts DC
- Drop: ca. 0,8 volts
- reverse polarity protection
- short circuit proof
- thermal protection
- overload proof
- Dimensions:
- 23 mm x 23 mm, 4 mm high
- Weight: about. 4 grams
- Shutdown-pin for remote control, dimming etc.



The difference between input and output voltage may not exceed 5 volts when not cooled. Otherwise the output power will decrease.

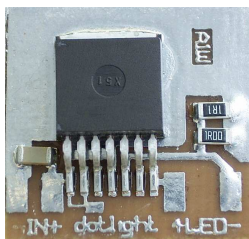
When mounted on a metal surface or heatsink e. g. with a cooltape pad, the difference between input and output voltage may be larger, depending on temperature.

A good thermal management is obtained by a double-sided copper-plated printed-circuit board.

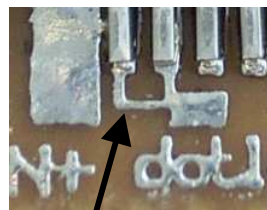
For example, when mounting at room temperature on the case of a PC with cooltape, the input-output-difference may be about 10V.

Desparately, this has influence on efficiency. For applications like this, we recommend using a HKO350 module.

Connections:



- IN + SHD + LED -



cut here

to activate the shutdown-pin

New:
External control by the
shutdown-pin.
Max. 40 V DC,
for dimming, remote-
control etc.

NEVER connect „- LED“ with minus of your power source!

Other values of output-current in the range from 50 mA to 1000 mA on request.

-date: 09/05 -alterations preserved-

A1W® is a registered trademark of Alois Wolf D-56457 Westerburg
homepage: <http://www.A1W.de> e-mail: info@A1W.de